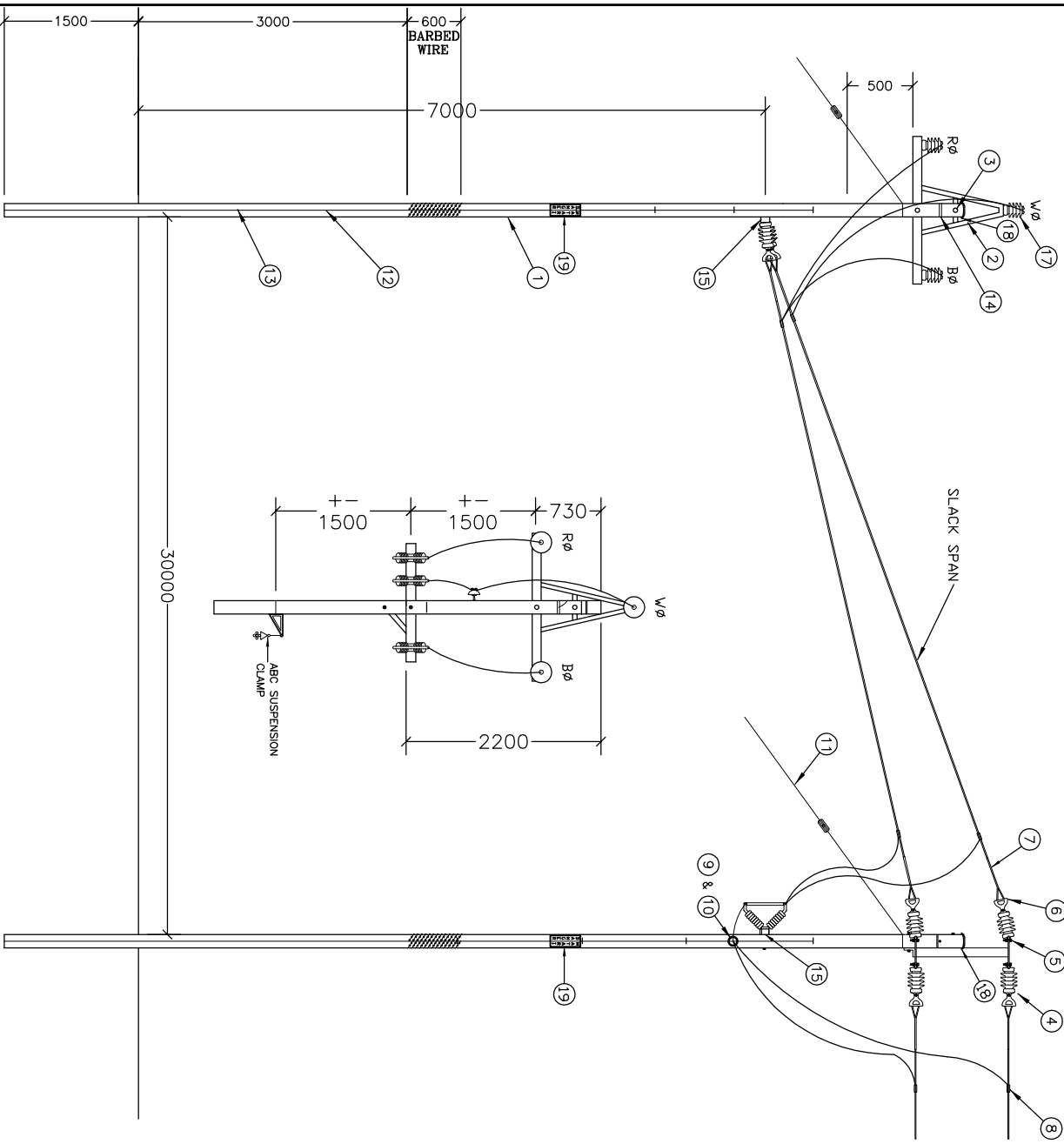


COPYRIGHT © 2009 EMCON
 All rights reserved. No part of this publication may be reproduced, stored in a retrieval system or transmitted in any form or by any means, electronic, electrostatic, magnetic tape, mechanical, photocopying, recording, or otherwise, without the permission in writing from EMCON.

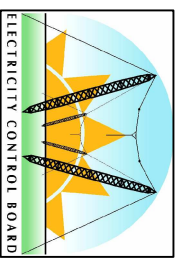


ITEM	DESCRIPTION	QTY	REMARKS
1	WOODEN POLE	2	11m LONG TOP 160mmØ
2	STRAIN A-FRAME	2	SEE DNG NO. STD-MAF-11
3	BOLTS & WOOD POLE WASHERS	9	M16x250mm COMPLETE
4	LONGROD INSULATOR	9	CULLINAN, EP342, 385 CREEPAGE
5	FIN	9	GALVANISED MILD STEEL
6	THIMBLE SOCKET	9	P.P. MTC 70
7	DEAD END	12	P.P. ABE 280
8	PG CLAMP	9	P.P. 2674-28
9	LINE POST INSULATOR	1	CULLINAN, EP 800, 388 CREEPAGE
10	WSP/LOCK	1	P.P. AMT 270-280
11	WV STAY ASSEMBLY	2	SEE DNG NO. STD-MAF-08
12	POLE EARTH CONDUCTOR	21m	17,4,00mm STAY WIRE
13	STAPLES	80	3x5,32mm HOT DIP GALVANISED
14	BAND-IT STRAPPING	2	20X0,7mm STAINLESS STEEL
15	CROSS-ARM	2	SEE DNG NO. STD-MAF-13
16	DROP-OUT FUSE 11kV	3	C/W FUSES - MGRW
17	FIN INSULATOR	2	CULLINAN, EP 474
18	POLE CAP		
19	DANGER PLATE		

NOTES:

1. THE A-FRAME AND BOLTS C/W NUTS AND WASHERS SHALL BE HOT DIPPED GALVANISED TO SABS 763.
2. ALL JUMPERS SHALL BE GOPHER BARE ALUMINIUM CONDUCTOR.
3. 12m WOODEN POLES SHALL BE USED FOR A T-OFF ACROSS A ROAD.
4. ALUMINIUM OXIDE GREASE SHALL BE USED ON ALL CLAMPS FOR CORROSION PROTECTION.

ELECTRICITY CONTROL BOARD



Box 2923
 Windhoek
 NAMIBIA
 Tel: (061) 374300
 Fax: (061) 374305

MEDIUM VOLTAGE BARE OVERHEAD DISTRIBUTION T-OFF STRUCTURE

DESIGNED: A.K
 DRAWN: J.W.S
 REV: 01-2001
 DRAWING No: STD-MVAF-11Kv-06
 SCALE: N.T.S

ERROR: syntaxerror
OFFENDING COMMAND: --nostringval--

STACK:

/Title
()
/Subject
(D:20100127124109+02'00')
/ModDate
()
/Keywords
(PDFCreator Version 0.9.5)
/Creator
(D:20100127124109+02'00')
/CreationDate
(johnny)
/Author
-mark-