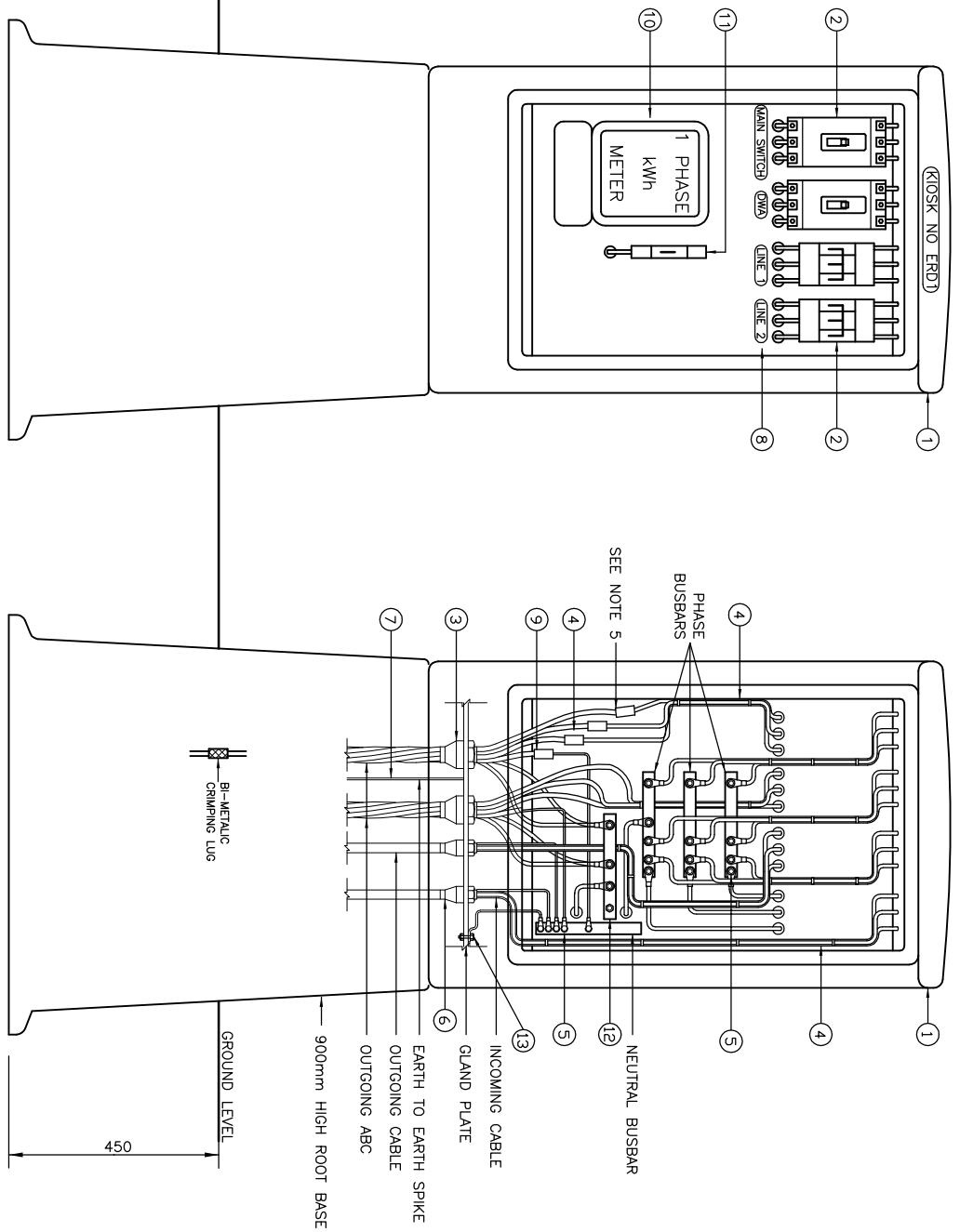


COPYRIGHT © 2009 EMCON
 ALL RIGHTS RESERVED. NO PART OF THIS PUBLICATION MAY BE REPRODUCED STORED IN A RETRIEVAL SYSTEM OR TRANSMITTED IN ANY FORM OR BY ANY MEANS, ELECTRONIC, MECHANICAL, PHOTOCOPYING, RECORDING OR OTHERWISE, WITHOUT THE PERMISSION IN WRITING FROM EMCON.



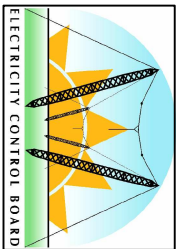
FRONT VIEW OF KIOSK

REAR VIEW OF KIOSK

ITEM	DESCRIPTION	QTY	REMARKS
1	DOUBLE DOOR KIOSK	1	FIREGLASS C/W ROOT BASE AS SPECIFIED
2	CIRCUIT BREAKER	1	FOR ABC
3	BRASS COMPRESSION GLAND	-	SIZE & LENGTHS AS REQ'D
4	PVC INSULATED CONDUCTORS	-	SIZE & QUANTITY AS REQ'D
5	TERMINATION LUGS	-	SIZE AS REQ'D C/W SHROUD
6	CABLE GLANDS	-	BARE CU CONDUCTOR 70mm ²
7	KIOSK EARTH CONDUCTOR	17m	WORDING & COLOUR AS REQ'D
8	LABELS	-	
9	BI-METALLIC TERMINATION LUGS	-	
10	5/PHASE KWh METER	-	
11	5/PHASE 40A 5KA C/B	-	
12	BUSBAR FOR STREET LIGHTING	-	
13	NEUTRAL EARTHING	-	

- NOTES:**
- KIOSK TO BE COMPLETE WITH 900mm HIGH ROOT BASE, GLAND PLATE, MOUNTING BOARD, FRAME AND BUSBARS.
 - THE RATING AND QUANTITY OF CIRCUIT BREAKERS TO BE INSTALLED SHALL BE AS INSTRUCTED.
 - CONDUCTOR SIZES USED IN THE KIOSK SHALL COMPLY WITH BS ONTO INSULATORS AS SPECIFIED FOR KIOSKS.
 - ALL BUSBARS SHALL BE SOLID COPPER INSTALLED.
 - CRIMPING PART OF LUG TO BE INSULATED WITH HEAT SHRINK. HEAT SHRINK ALSO TO COVER THE FIRST 30mm OF THE CONDUCTOR INSULATION.

ELECTRICITY CONTROL BOARD



Box 2923
 Windhoek
 NAMIBIA
 Tel: (061) 374300
 Fax: (061) 374305

**LOW VOLTAGE DISTRIBUTION:
 TYPICAL DISTRIBUTION KIOSK WITH
 STREETLIGHTING**

DESIGNED: A.K	DRAWN: J.W.S	REV: 01-2001
DRAWING No: STD-LVBOH-20	SCALE: N.T.S	

ERROR: syntaxerror
OFFENDING COMMAND: --nostringval--

STACK:

/Title
()
/Subject
(D:20100127093716+02'00')
/ModDate
()
/Keywords
(PDFCreator Version 0.9.5)
/Creator
(D:20100127093716+02'00')
/CreationDate
(johnny)
/Author
-mark-