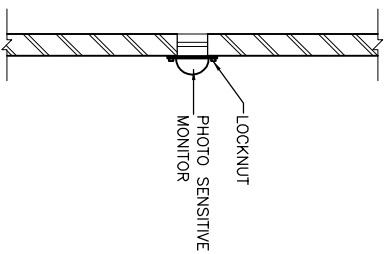
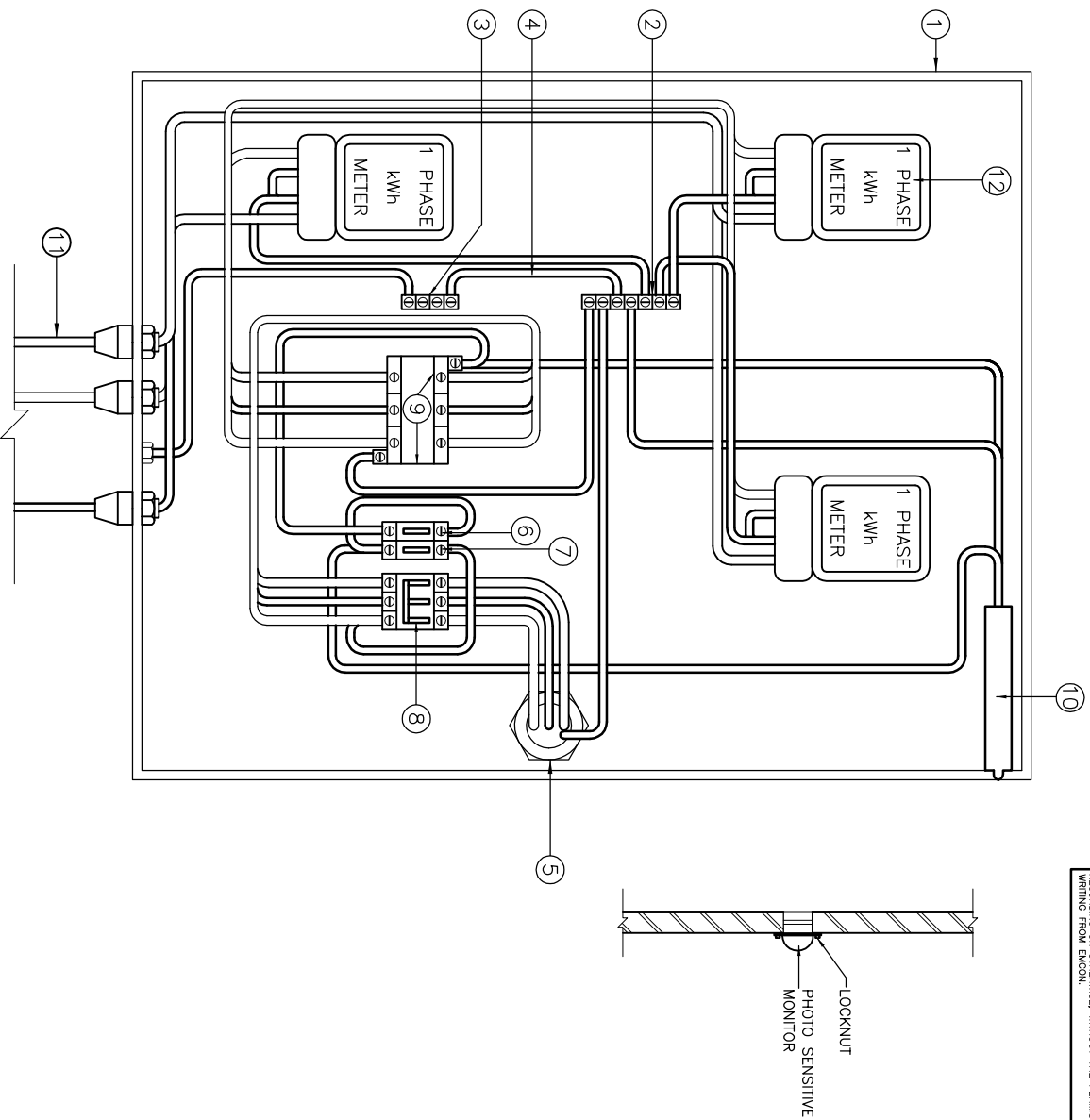


COPYRIGHT © 2009 EMCON
 ALL RIGHTS RESERVED. NO PART OF THIS PUBLICATION MAY BE REPRODUCED STORED IN A RETRIEVAL SYSTEM OR TRANSMITTED IN ANY FORM OR BY ANY MEANS, ELECTRONIC, MECHANICAL, PHOTOCOPYING, RECORDING OR OTHERWISE, WITHOUT THE PERMISSION IN WRITING FROM EMCON.

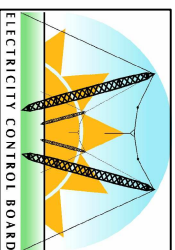


ITEM	DESCRIPTION	QTY	REMARKS
1	METERBOARD	1	SINGLE-PHASE REEF TYPE GALV.
2	NEUTRAL BAR	1	
3	EARTH BAR	1	
4	N/E LINK	1	
5	50mm GALVANISED SLEEVE	1	LINK BETWEEN TWO BOARDS
6	BYPASS,60A,SP,ISO	1	BYPASS PHOTO CELL
7	CIRCUIT BREAKER,5A, SP	1	PROTECTION FOR CONTACTOR
8	ISOLATOR,60A TP	1	LOCAL ISOLATOR
9	CONTACTOR,40A/TP, AC3	1	SWITCHING OF LOAD
10	PHOTO CELL	1	NEMA 2021
11	16mm ² CU CONDUCTOR	3	LV STABILISED SLEEVE PROTECTED AS SPECIFIED
12	10 kWh METER	9	

NOTES:

1. FOR MOUNTING DETAILS REFER TO DWG STD--LVABC-24
2. METERBOARD TO INCLUDE RAISED PLATE, COVER AND HINGED LID. COVER IS NOT SHOWN HERE.
3. THE RATING OF THE MINIATURE CIRCUIT BREAKER (MCB) SHALL BE AS INSTRUCTED. (HEINEMANN SF1 -63)
4. THE CONDUCTOR SIZES USED IN THE METERBOARD SHALL COMPLY WITH SABS 0142.
5. ALL BUSBARS SHALL BE SOLID COPPER INSTALLED ONTO INSULATORS.

ELECTRICITY CONTROL BOARD



Box 2923
 Windhoek
 NAMIBIA
 Tel: (061) 374300
 Fax: (061) 374305

DRAWING TITLE

**LOW VOLTAGE AERIAL BUNDLED
 CONDUCTOR DISTRIBUTION:
 STREETLIGHT METERBOARD**

DESIGNED: A.K	DRAWN: J.W.S	REV: 01-2001
DRAWING No: STD-LVABC-32		SCALE: N.T.S

ERROR: syntaxerror
OFFENDING COMMAND: --nostringval--

STACK:

/Title
()
/Subject
(D:20100127101236+02'00')
/ModDate
()
/Keywords
(PDFCreator Version 0.9.5)
/Creator
(D:20100127101236+02'00')
/CreationDate
(johnny)
/Author
-mark-