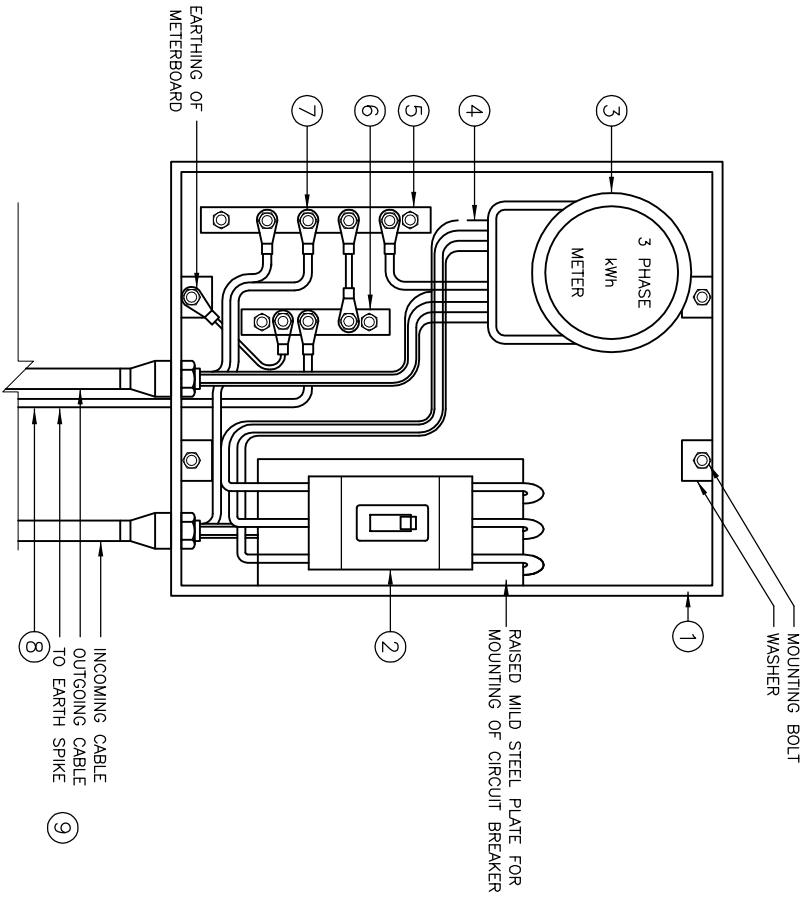


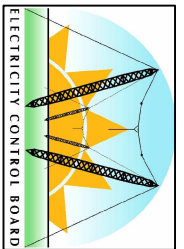
COPYRIGHT © 2009 EMCON
 ALL RIGHTS RESERVED. NO PART OF THIS PUBLICATION MAY
 BE REPRODUCED STORED IN A RETRIEVAL SYSTEM OR
 TRANSMITTED IN ANY FORM OR BY ANY MEANS, ELECTRONIC,
 ELECTROSTATIC, MAGNETIC TAPE, MECHANICAL, PHOTOCOPYING,
 RECORDING OR OTHERWISE, WITHOUT THE PERMISSION IN
 WRITING FROM EMCON.



ITEM	DESCRIPTION	QTY	REMARKS
1	METERBOARD	1	MAX. DEMAND 60A TYPE
2	TRIPLE POLE MCB	1	SIZE AS REQUIRED C/W SHROUD
3	KWH METER	1	VECTRON TYPE C/WP - 3 PHASE
4	PVC INSULATED CONDUCTORS	-	SIZE AS REQUIRED
5	NEUTRAL BUSBAR (COPPER)	1	225X25X6mm C/W INSUL. MOUNT
6	EARTH BUSBAR (COPPER)	1	225X25X6mm C/W INSUL. MOUNT
7	TERMINATION LUGS	-	SIZE & QUANTITY AS REQUIRED
8	EARTH CONDUCTOR	1	1.7m 25mm ^Ø BARE COPPER
9	EARTH SPIKE	1	1.7m LONG 16mm ^Ø (NOT SHOWN)
10	LABELS ON COVER	-	WORDING AS REQUIRED

NOTES:
1. FOR MOUNTING DETAILS REFER TO DWG. STD-LVABC-24
2. METERBOARD TO INCLUDE RAISED PLATE, COVER AND HINGED DOOR.
3. COVER IS NOT SHOWN HERE.
4. AS INSTRUCTED (HENEMAN SFS-63)
5. THE CONDUCTOR SIZES USED IN THE METERBOARD SHALL COMPLY WITH SABS 0142.
6. ALL BUSBARS SHALL BE SOLID COPPER INSTALLED ONTO INSULATORS.

ELECTRICITY CONTROL BOARD



Box 2923 Windhoek NAMIBIA
 Tel: (061) 374300 Fax: (061) 374305

DRAWING TITLE
 LOW VOLTAGE AERIAL BUNDLED
 CONDUCTOR DISTRIBUTION:
 METERBOARD LAYOUT:
 THREE PHASE CONSUMER (60A)

DESIGNED: AAK **DRAWN:** J.W.S **REV:** 01-2001
DRAWING No: STD-LVABC-22 **SCALE:** N.T.S

ERROR: syntaxerror
OFFENDING COMMAND: --nostringval--

STACK:

/Title
()
/Subject
(D:20100127103902+02'00')
/ModDate
()
/Keywords
(PDFCreator Version 0.9.5)
/Creator
(D:20100127103902+02'00')
/CreationDate
(johnny)
/Author
-mark-